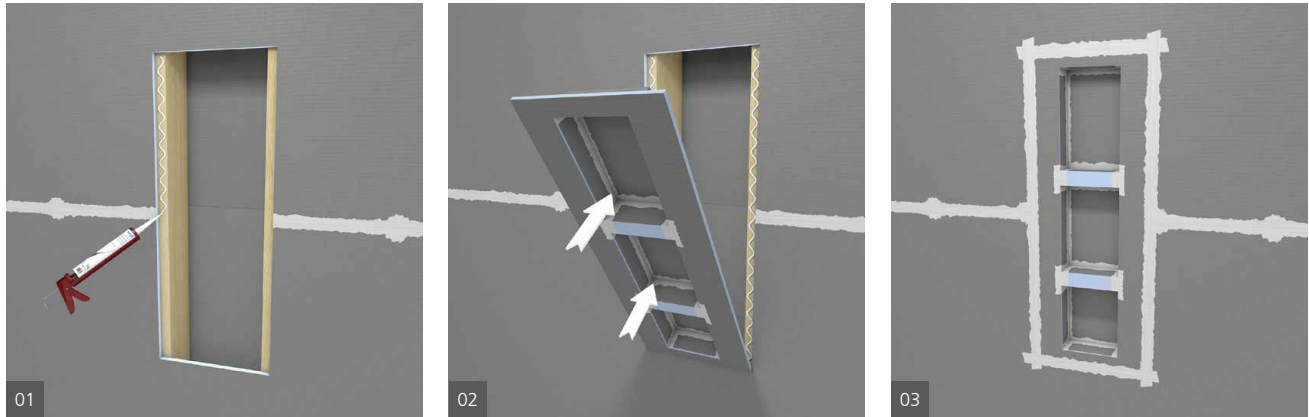


How to install wedi® Shower Niches

wedi prefabricated shower niches are made from wedi 1/2 in. wedi® Building Panels for strength, and come in a variety of different size options to fit every shower necessity. wedi® Shower Niches install quickly, safely, and integrate flush into the wall panel assembly with wedi fasteners and wedi® Joint Sealant. Shelves, included in some models, are optional and may be installed exactly where they best fit the design.



1. Measure and cut out a space of the existing 1/2 in. wall panel (matching the dimensions of the chosen niche) so the niche flanges rest on the studs 2 ft. x 4 ft. (16 in. o.c.) on both sides and line up flush with the surround backerboard or panels.
2. Apply a bead of wedi® Joint Sealant onto the exposed stud, as well as along the inside edges of the wall panel.
3. Insert the wedi® Shower Niche into the opening.
4. Apply a bead of wedi® Joint Sealant along the outside seam and smooth out with a putty knife to cover and waterproof the seam.
5. Start tiling immediately once sealant is dry to the touch.

If a wedi® Building Panel is used, it is recommended to use wedi washers and fasteners in the transition seams between the niche and wedi panel to create a flush transition and maintain fastening of the wall panel every 12 inches on the wall framing stud. The washers are then waterproofed using wedi® Joint Sealant.

