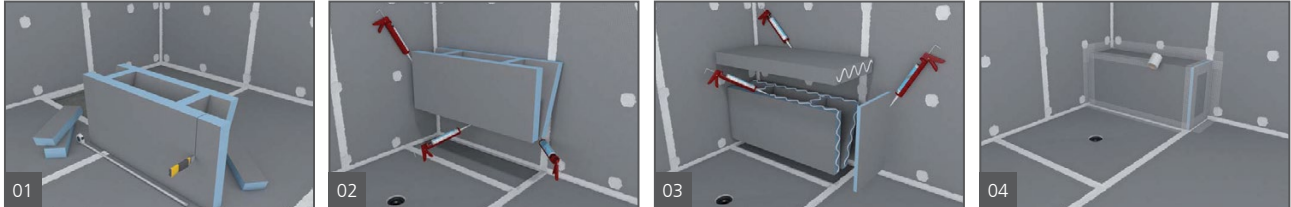
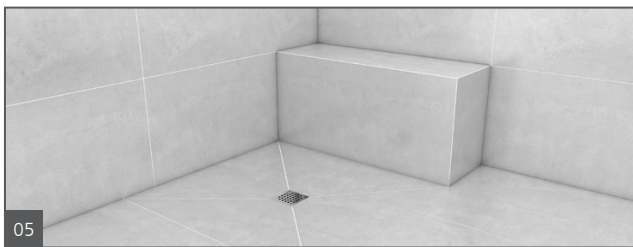


## How to install wedi Sanoasa® Benches 1-3

wedi Sanoasa® Benches 1-3 offer design solutions for smaller shower spaces and can be installed into newly built showers or as retrofits. They fit right in with wedi Shower Systems and may work in conventional shower systems as well. The benches come in two parts, the top/seat and bench support. You'll find wedi® Joint Sealant already included in the box and there are additionally optional accessories in the kit to allow for any sort of special situations you may run into in a project. There are three models that are available. The difference between models are the front finish and bench top which are: quarter round, square, or slanted finish options. Each model can be installed with its top sections front smoothly aligned with the bench supports front, or have it overhanging the bench support.



1. Cut the bench support and seat to length using a knife, handsaw, or circular saw.
2. Dry-fit the bench. On the bench locations that have direct and full contact with the wall and (sloped) floor, you'll want to apply joint sealant in a continuous 1/2 in. thick bead. Ensure the bead is applied in a zigzag fashion to ensure good distribution of sealant for great contact and adhesion everywhere. In locations where there is no full contact surface available due to the slope in the floor, use thinset mortar instead of wedi® Joint Sealant and backfill such gaps if no greater than 1/4 in. If a gap is greater than 1/2 in. (cut the bench supports to match the shape of the floor. Ensure that structure is kept tight in position until sealant or thinset mortar have initially set. Ensure the wall/floor substrate is appropriate for the wedi joint sealant or thinset mortar to work ( e.g. use primer when installing over existing tile surfaces when retrofitting a bench)
3. The bench support and top are connected with continuous 1/2 in. beads of wedi® Joint Sealant. Firmly press parts together and against the sealant or thinset adhesive as described in step 2. The seat is pre-pitched by wedi so water can run off towards the drain later. The Sanoasa kit comes with 1/4 in. wedi® Building Panel, which you can use to close off an open side of the bench. Install these panels with wedi® Joint Sealant. Cut the panels with a knife to adjust their shape to that of the bench.
4. Apply 1/2 in. beads of wedi® Joint Sealant continuously over every seam and transition area. Use a putty knife to smooth the sealant so it covers 1 in. of the wedi product on either side of a seam or transition. However, thinset mortar filled seams are not sealed over but require a wedi mesh tape placed over the seam when tiling commences.

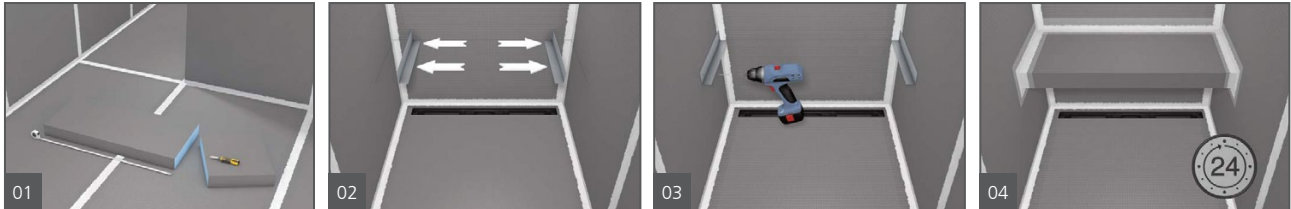


5. Start tiling immediately once sealant and thin set tile adhesive is dry to the touch.

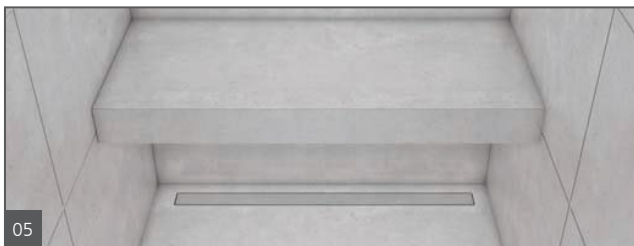


## How to install wedi Sanoasa® Bench 4

The Sanoasa 4 is a suspended bench that allows a design creating more space in any shower while adding suspended seating comfort and can carry up to 500 lbs of weight across once it is tiled. The Sanoasa 4 is 31/8 in. thick and 47 1/4 in. long. The bench comes pre-sloped on its surfaces so water can safely run off to the front of the seat where it can move towards the shower drain instead of causing puddles on the bench tiles. The Sanoasa 4 can be cut to a shorter length and made-to-fit between three shower walls where the bench connects. This bench is ideal for installation prior to tiling but can also be installed over existing tiled walls. In the latter case, there is a risk the waterproofing of the walls may be damaged by the Sanoasa fasteners which are difficult to seal like in most retrofit installations where fasteners penetrate through tile and waterproofing below the tile. This bench can carry up to 500 lbs. of load on its surface once tiled without creating a risk for cracks in grout or tile. The larger and thicker the tile and stone, the more it adds to stiffness and load capability of this bench. A minimum tile size of 4 inches should be used and tile should be a minimum of 1/4 in. thick.



1. Cut and dry-fit the bench into the three-wall opening in the shower. Dry-fit with the two L-shaped steel profiles loosely fitted onto the sides of the bench. Mark the outline of the bench where it will connect to the walls so you can see later where to apply wedi® Joint Sealant.
2. Determine installation height and apply wedi® Joint Sealant widely over the wallboard area where the steel profiles will be installed. Press the steel profiles into position.
3. Install steel profiles in a level position. Apply wedi fasteners through the steel profiles and wallboards into framing spaced 16 in. o.c. apart.
4. Apply wedi® Joint Sealant widely to all areas connected with the bench (all three walls and to both steel bracket surfaces). Insert the bench and press into the bed of sealant. Ensure the bench will stay in a tight position to allow the sealant to bond. Apply a 1/2 in. bead of sealant over and along all transition seams between wall and bench including on the underside of the bench. Finally, apply wedi mesh tape on all such seams. The mesh tape is later covered with thinset mortar. Allow wedi® Joint Sealant 24 hours to cure.



5. After 24 hours, tiling can commence to include the underside of the bench.

