

wedi Sanoasa® Wellness Benches and Loungers

Technical Data Sheet

...wedi®

- Complete range of modular tileable benches, seats and loungers for use in steam rooms and other wet areas.
- 100% waterproof and vapor retardant – wedi XPS foam.
- Insulating properties reduce vapor transmission pressure and save energy.
- Used with wedi Subliner Dry and wedi Sealant 620 vapor-proofing system in steam rooms.
- No need for framework support.
- Broad variety of standard products and limitless custom fabrication possibilities.
- Fast, clean and efficient installation through full prefabrication of modules.
- Create your dream of a wellness oasis in any place.

Product advantages and use

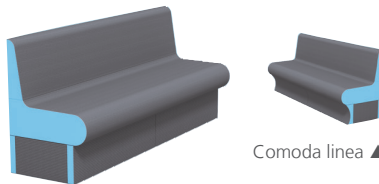
wedi takes rejuvenation and relaxation to a whole new level in the bathroom. wedi's unique, elegant wellness elements create an unforgettable spa experience. There is no limit to the design possibilities wedi offers for a customized and peaceful bath. We offer standard and customized options for benches and loungers, and more modular designs such as for sinks or tubs.

wedi Sanoasa benches are constructed to enable unmatched freedom of visual design. Both the seating areas and the carrier elements can be positioned in various ways, and their shapes and sizes can be modified for any project.

wedi Sanoasa Wellness Benches and Loungers & Sanbath Wellness Design Systems (custom and standard options)wedi takes rejuvenation and relaxation to a whole new level in the bathroom. wedi's unique, elegant wellness elements create an unforgettable spa experience. There is no limit to the design possibilities wedi offers for a customized and peaceful bath.

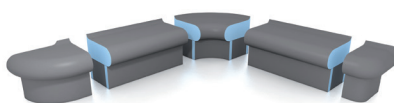


Comoda ▲

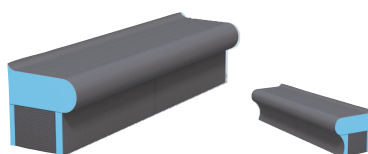


Comoda ▲

Comoda linea ▲



Bellina ▲



Bellina ▲

Bellina linea ▲



Technical Properties ■ wedi Systems

Properties & Test Methods Value (wedi Building Panel and Fundo Shower System Components)		
Tensile Strength *	ASTM D1623-09	76 psi
Waterproof *	ASTM D4068 / ANSI A118.10-1999	Passed
Waterproofness of Assembly *	ASTM E331	Passed, wedi Fundo Kit assembly (complete system)
Capillarity *		0
Fungus / Bacteria Resistance *	ASTM G21	Passed, No Growth
Linear Variation *	AC 159/ASTM 1037-39	Passed, less than 0.07 %
Surface Burning Characteristics *	ASTM E84-16 (NFPA 255, ANSI / UL 723, UBC 8-1) Tested as required without tile on Building Panel surface	Flame Spread Index (FSI): 20 Smoke Developed Index (SDI) : 70 Classification: Class A
Shear Bond Strength *	ANSI 118.10-1999 Section 5	7 day Shear Strength Dry: 159 psi 7 day Shear Strength Wet: 112 psi 4 week Shear Strength Dry: 216 psi 12 week Shear Strength Dry: 217 psi 100 day Shear Strength Wet: 201 psi
	Minimum performance requirement 50 psi	

* Entire wedi shower system tested

* Consult wedi for proper subfloor, tile, setting materials choice to design heavy duty commercial use floor surfaces.

Approvals & Certificates				
Approvals and certificates applicable to entire Fundo Shower System incl. wedi Building Panel	City of New York, MEA 912-52-SM	Fundo Shower Systems & Building Panels: ICC PMG 1189 (for USA and Canada)	Meets all applicable ANSI/ISO Standards incl. ANSI 118.10 and IAPMO PS106	TCNA handbook recognized for wall, floor, countertop, & more applications
	City of Los Angeles Approval	BBA (British Board of Agrément)	DIN EN ISO 9001	CE marked
	Diverse State Approvals			

Environmental Consideration
Contains no unbonded fire retardants like HBCD (Hexabromocyclododecane) which has been banned in Canada and is a toxic substance of high concern with the US EPA.

ICC-PMG 1189 Report ■ National Building Code Compliances

WEDI FUNDO SHOWER SYSTEM AND TILE BACKER BOARD UNDERLAYMENTS	
CSI	DIVISION: 22 00 00 – PLUMBING Section: 22 40 00 – Plumbing Fixtures (Shower System Kit)
Product certification system	The ICC-ES product certification system includes testing samples taken from the market or supplier's stock, or a combination of both, to verify compliance with applicable codes and standards. The system also involves factory inspections, and assessment and surveillance of the supplier's quality system.
Product	wedi Fundo Shower System and Tile Backer Board Underlayments
Listee	wedi Corporation ■ 1160 Pierson Drive, Batavia, IL 60510 www.wedicorp.com
Compliance with the following codes	2021, 2018, 2015, 2012 and 2009 International Plumbing Code® (IPC) 2021, 2018, 2015, 2012 and 2009 International Residential Code® (IRC) 2021, 2018, 2015, 2012 and 2009 International Building Code® (IBC) 2021, 2018, 2015, 2012 and 2009 National Standard Plumbing Code® (NSPC) 2021, 2018, 2015, 2012 and 2009 Uniform Plumbing Code® (UPC)* 2019, 2016 and 2013 California Plumbing Code (CPC)* 2020 and 2017 City of Los Angeles Plumbing Code 2015, 2010 and 2005 National Plumbing Code of Canada** * Uniform Plumbing Code is a copyrighted publication if the International Association of Plumbing and Mechanical Officials ** National Plumbing Code of Canada is a copyrighted publication of National Research Council Canada
Compliance with the following standards	ANSI A118.10-2020, Load Bearing, Bonded, Waterproof Membranes for Thin-Set Ceramic Tile and Dimension Stone Installations ASME A112.6.3-2019, Floor and Trench Drains ASTM E 96-2021, Standard Test Methods for Gravimetric Determination of Water Vapor Transmission of Materials ASTM E 331-00(R16), ASTM E331-00(2016) Standard Test Method for Water Penetration of Exterior Windows, Skylights, Doors, and Curtain Walls by Uniform Static Air Pressure Difference ICC-ES EG 159, Evaluation Guideline for Composite Backer Board (Approved Dec 2004) ICC-ES AC 71, Acceptance Criteria for Foam Plastic Sheathing Panels Used as Water Resistive Barriers (Approved Feb 2003, Ed Revised Nov 2018) IAPMO PS 46-2012, Field Fabricated Tiling Kits IAPMO PS 106-2015e1, Tileable Shower Receptors and Shower Kits
Identification	Packaging label for each system shall include the manufacturer's name or trademark as well as the ICC-ES PMG certification mark.
Installation	The wedi Fundo Shower Systems shall be installed in accordance with the manufacturer's published instructions and the applicable code(s). The wedi Fundo Shower system components shall be assembled and can be customized in the field. When provided drains must comply with ASME A112.18.2/CSA B125.2 as applicable. The wedi pre-sloped, ready-to-tile shower bases may be used in lieu of a CSA B45.5/IAPMO Z124 plastic shower receptors or any liner based shower installations. The wedi drain units do not require weep holes.
Listed Models and Characteristics	The wedi Fundo Shower Systems consist of the following: a) The wedi waterproof Fundo show bases are waterproof, pre-sloped, ready-to-tile floor units. The shower bases with linear and point drainage include factory sealed parts integrated into the floor bases and can be installed with or without curbs in recess, barrier free installations. b) The wedi waterproof building panels which are engineered as a general purpose backer board and underlayment for tile as well as an integral part of the Fundo shower system and consist of a rigid extruded polystyrene foam covered on both sides with a cement-based resin surface and reinforcing mesh for durability and bond performance with tile adhesives. c) the wedi Vapor 85 Building Panel which may be used with or without wedi shower systems. It is a specialized building panel featuring the original wedi Building Panel but with its vapor exposed side protected by wedi Subliner Dry. The wedi Vapor 85 was tested to ASTM E96 Procedure E as a complete assembly with the wedi 620 joint sealing membrane and wedi Subliner Dry sealing tape over seams and fastener points and was found to have a perm rating of 0.03 perms which meets the permeance rating requirement of 0.5 perm or less and can be used in continuous use steam shower/room applications without additional vapor retarders in accordance with Tile Council of North America (TCNA) 2014 Handbook for Ceramic Glass and Stone Tile Installation (SR613-14 and SR614-14). d) The wedi waterproof Fundo Shower system accessories which may include the following waterproof components: wedi pre-sloped curbs, wedi niches, wedi seats, wedi fasteners, wedi drain cover plates, wedi sealants, wedi Fundo drains, wedi Subliner sheet waterproofing membrane system and tapes, with wedi Subliner Dry Bonding Flange drain, wedi Subliner Dry Tub Sealing Tape. The wedi Fundo family line includes the following: Primo, Riolo, Riolo Modular, Riofino, Discreto, Ligno and OneStep. The wedi Fundo Shower system components and assembly for shower installations were proven to be waterproof, water-resistant, and mold resistant when tested in accordance with A118.10-2014 and ASTM E331. The wedi drains have found to comply with with ASME A112.18.2/CSA B125.2 and do not require weep holes.

wedi Sanoasa Wellness Benches and Loungers Technical Drawings

To view/download the technical drawings for all wedi Sanoasa Wellness Benches and Loungers, [click here](#) or contact wedi Customer Service.

Requirements/Limitations for wedi products used in Shower and Wet Room applications

The wedi Sanoasa 4 can carry up to 500 lbs. of load on its surface once tiled without creating a risk for cracks in grout or tile. The larger and thicker the tile and stone, the more it adds to stiffness and load capability of this bench. A minimum tile size of 4 inches should be used and tile should be a minimum of 1/4 in. thick. To view general limitations, download our technical handbook [here](#) and visit the Requirement/Limitation section as it may apply to wedi Sanoasa Wellness Benches and Loungers.

Packaging and Sales

No minimum or maximum order is required. To view product sizes, [click here](#). Scroll down to 'Technical Data' and then click 'Product Sizes'. For other loungers and bench items, please contact wedi Customer Service.
Do not expose to heat/UV rays. Store flat in unopened box.

Storage & Handling

Consult Safety Data Sheet SDS (if available) for safe handling of product
Store product in original packaging on a flat and solid surface and do not store other product or material on wedi product.
Ensure product is protected against traffic and exposure to moving objects to avoid damage to the product.
Protect product during storage in warehouse or on project sites and when in transit against weather and keep at all times in a dry and cool environment (between 41°F to 95°F (5°C to 35°C)) and where product is protected against direct exposure to UV/sunlight.

Warranty

To view our information regarding our general and PRO system warranties, or to submit your PRO warranty registration form, [click here](#). A copy of wedi's 10, 15 and 20-year system warranty information can be downloaded by clicking on the button at the top of the page: [Download Warranty](#).

Training, Installation Resources and Technical Support

To view our training and workshop schedule, [click here](#).
To download our digital technical handbook, [click here](#).
To get in touch with your local technical sales support manager, [click here](#) and select your state to be provided with contact information. Or, scroll down and fill out the contact form to send a message directly to your local technical sales support manager!

Architectural Support

- Virtual and in-person AIA Presentations for CEU's
- Specification assistance, technical drawings and more
- For more information, contact Austin Rott, our Commercial Project Division Sales Manager at:
email: austin.rott@wedincorp.com
phone: **310-279-9132**.